



TOPLINES

Miniature Schnauzer Club of Michigan

"You have within you right now, everything you need to deal with whatever the world can throw at you."

—Brian Tracy

TOPLINES

Miniature Schnauzer Club of Michigan

January/February
2013

Editor-Joanne Forster, 2186 S. Elkton Rd, Elkton, MI 48731 Ph. (989)-375-4106
Email: jofor@airadv.net



Inside this issue:

- Cover Story pg 1
- Next Meeting pg 2
- Info
- 2013 Calendar & pg 3
- Whelping Box
- Legislative pg 4
- Corner
- Show Calendar pg 6

A life-saving acupuncture point

Acupuncture is a popular modality for controlling arthritic pain, managing urinary incontinence, and ward off seizures. However, it's also an excellent complementary therapy for emergency situations in which dogs need to be resuscitated.

The Colorado State University Veterinary Medical Center's Critical Care Unit routinely uses acupuncture on animals in cardiac or respiratory arrest in combination with conventional procedures. Interestingly, just a single powerful point is employed.

Clinicians use GV25 - the 26th point on the Governing Vessel meridian (energy channel). Of the many Chinese names given it, the moniker Ren Zhong (Man's Middle) is probably the best because it describes both the point's position and function.

GV26 is on the midline (hence its name), below the nasal philtrum - the tissue between the between the two nostrils. Some describe it as being just above the lips. To stimulate this point, a needle (acupuncture needle or

small-diameter hypodermic needle) is inserted until it hits bone or cartilage. The needle is then vigorously manipulated at this depth with a rapid pecking motion.

Man's Middle also reflects that that two meridians meet at the point. Meridians are either Yang or Yin, which are direct opposites in how they influence the body. The most Yang channel is the Governing Vessel, which runs along the midline of the back, over the head and down the nose.

The Yang system is somewhat analogous to the sympathetic nervous system, which generates the "fight or flight" response. It is responsible for increasing heart and breathing rates during periods of stress.

In contrast, the most Yin meridian is the Conception Vessel (CV), which runs along the midline of the belly and chest, and up the chin. This channel creates a relaxations response when stimulated, much like the parasympathetic system. GV26 is the point where the GV and CV meridians connect.

According to Chinese medical

theory, inserting a needle into GV26 helps re-establish Yin-Yang harmony. From a scientific perspective, needling GV26 has profound effects because there are numerous nerve fibers, both sympathetic and parasympathetic, at that location.

Plentiful studies performed in varied species confirm that GB26 needling stimulates respiration and raises heart rate. A recent report on the use of GV26 for resuscitating neonatal kittens after Caesarean birth showed a positive response when normal techniques failed.

GV26 does not work in all cases. The type of needle stimulation and the patient's drug status and depth of anesthesia (if the dog is anesthetized) all influence its effect on heart and respiratory rates.

Through stimulation of GV26 is especially beneficial in the emergency room and in dogs under anesthesia, it can be used by dog owners at home. If your dog is electrocuted, falls into water,



Miniature Schnauzer Club of Michigan

MSCM SUNDAY BRUNCH

February 17, 2013

11:00 am {Brunch}

12:00 Noon {General Meeting}



Coral Gables Restaurant

2838 E. Grand River Ave.

East Lansing, MI

Phone 517-337-1311

Brunch

General Meeting

Directions: Take I-96 to exit 110 (Okemos Rd.). Go north on Okemos Rd. to M-43 (Grand River Ave.). Businesses on that corner include: Bennigan's Restaurant, Marathon gas station & BP/Amoco station. Turn left on to M-43 (Grand River). After the bridge over the railroad tracks, there is a traffic light at Park Lake Rd. and another at Northwind Dr. (there's a Farmer Jack's on south-west corner of intersection). **Coral Gables** entrance is the fourth on the right following this light (after Tom's Party store, a Hollywood Video, & the new Oriental Market). If you get to Brookfield Shell gas station, you've gone too far.

From the North: From Business 69 left onto Park Lake Rd. Right (East) onto M-43 (Grand River Ave.) Follow directions from there as detailed above.

Please contact Karin Jaeger for additional information

Phone (517) 351-0412 or email at: karinjaeger@voyager.net and let her know that you are coming!

GUESTS ARE ALWAYS WELCOME!!

2013 Calendar of Important Events



FEBRUARY 17-
MSCM Meeting,
Awards & Brunch-
Coral Gables, East
Lansing (details on
Page 3)

Farms, Gray Summit, Missouri

JUNE - TBA

JULY 26- MSCM Fourth Agility Trial,
Dexter, MI

OCTOBER 4-6- Montgomery County
Weekend-Pennsylvania

OCTOBER 20- MSCM Meeting, Quinn
residence, Macomb

APRIL-TBA-

MSCM Meeting, Bavarian Inn, Frank-
enmuth

AUGUST - TBA

SEPTEMBER 27-
MSCM Fall Specialty Show-Monroe,
MI-Monroe County Fairgrounds

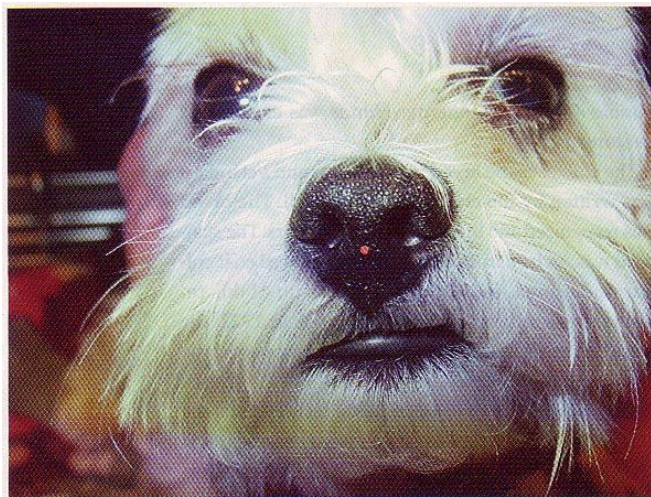
DECEMBER - 7

MSCM Christmas Banquet, Coral Ga-
bles, East Lansing

MAY 8-12- Schnauzerpalooza, Purina

Continued from page 1

or suddenly stops breathing for any rea-
son, inserting a needle (or even pushing
on the location with a sharp fingernail
or knitting needle) could help save his
life.



The red dot shows the location of acupuncture point GV26.



The Whelping Box

Born November 18, 2012—4 girls and 1
boy. All are Black & Silver
Dam: Tinker (Ch. Loneacre's Tinkering
with Chance)
Sire: Robson (Ch. Sercatep's Somebody
Said).
Litter owner is Terri Harmon



MSCM Agility Trial

Friday, July 26, 2013
Canine Sports & Recreation Center
Dexter, MI

Member volunteers needed! If you can't make it to the
trial, volunteer to make food to feed the workers!
More info on the trial to come later

MINIATURE SCHNAUZER CLUB OF MICHIGAN

TOPLINES

is a bi-monthly publication

January-February

March-April

May-June

July-August

September-October

November-December

Editor - Joanne Forster

We're on the Web!

www.miniatureschnauzerclubofmichigan.org

LEGISLATIVE CORNER

Mary Ann Kozlowski

Yes, I know. Agility has gotten in the way of my commitment to Joanne Forster and Toplines to write a quarterly article on Legal Issues referencing dogs and animals. I could blame Sue Quinn for introducing me to the sport with Duke or I could blame Lynn Baitinger for having so much fun, but I really only have myself to blame for wanting to spend so much time with my wonderful dog Katy. Ok, enough apologies let's get to work!

I wanted to let you know about another great resource that we have in Michigan to learn about issues related to animals and dogs. Michigan was the first state in the country to establish an animal law section of the state bar. Every attorney that is licensed in the state must pay dues and belong to the State Bar. The State Bar then has "sections" that attorneys join on a yearly basis that allows them access to information about a particular field of law. Since I work in healthcare, I belong to the health care section of the State Bar. The section holds meetings throughout the year and sends articles and

The objective of the Miniature Schnauzer Club of Michigan is to advance the principals and scientific practices in the breeding of purebred Miniature Schnauzers; foster co-operation between breeder, owner, and veterinarian; encourage the exchange of information and experience among the club members and between show-giving clubs; to conduct sanctioned and licensed specialty shows and matches; and to encourage the adherence to the high standards of conduct and to the rules and regulations of the American Kennel Club.



information on issues related to healthcare that may help me in my work.

In addition to healthcare, I am also a member of the animal law section. Michigan is home to one of the most prominent and well known attorneys in Animal Law in the world. His name is Professor David Favre. Professor Favre teaches animal law at Michigan State University. He also established and is editor in chief of the Animal Legal & Historical Center which is an on-line resource for animal issues. On the home page of the website, it states that "We believe this site is the largest legal website devoted to animal issues in the world. Unsurprisingly, the website's most sought after materials relate to the many issues that dogs provide our society."

To access the Animal Legal & Historical Center website, go to www.animallaw.info/ On the home page for January 2013, you will see articles related to Michigan such as Michigan considers hunt for gray wolf as well as three bills aimed at cracking down on animal fighting. Also of interest this month is an article related to more states allowing pets to be

included in domestic violence protection orders. This has been a hot topic in many states issue spouses are afraid to leave an abusive relationship for fear of harm to the family pet.

If you have time, check out the website and add it to your favorites. It not only allows you access to information on laws in Michigan but has a drop down menu on the left side of the home page to enter other states, topics, subjects or other species of animals that you may want to get information.

Show Calendar

Obedience & Rally

March 2-3 Obed & Rally
 Detroit Kennel Club
 Detroit, MI
 Closes 2-13

March 9-10 Obed
 St. Joe Valley Agility Club
 Buchanan, MI
 Closes 2-20

March 22-24 Obed & Rally
 CDTC
 Flint, MI
 Closes 3-6

March 29-31 Obed & Rally
 Kalamazoo KC
 Kalamazoo, MI
 Closes 3-13

April 5-7 Obed & Rally
 Saginaw Valley KC

Birch Run, MI
 Closes 3-20

April 26-28 Obed & Rally
 Progressive Dog Club
 Birch Run, MI
 Closes 4-10

Agility

March 1-3
 Sportsmen's DTC
 Lapeer, MI
 Closes 2-11

March 8-10
 Oakland Cty KC
 Lapeer, MI
 Closes 2-13

March 30-31
 Bouvier Club
 Dexter, MI
 Closes 3-13

April 5-7
 German Wirehaired Club
 Dexter, MI
 Closes 3-21

April 12-14
 Siberian Husky Club
 Dexter, MI
 Closes 3-2

April 19-21
 AADTC
 Whitmore Lake, MI
 Closes 4-5
 OUTDOORS

April 26-28
 Ibizian Hound Club
 Dexter, MI
 Closes 4-12

Conformation

March 2-3
 Detroit Kennel Club
 Detroit, MI
 Closes 2-13

April 6-7
 Saginaw Valley KC
 Birch Run, MI
 Closes 3-20

April 26-28
 TCM, Progressive KC
 Birch Run, MI
 Closes 4-10

